

Selecting Indicators for Early Childhood Systems Change Projects A Reference Guide

Objectives

- ▲ Provide context for Reference Guide development
- ▲ Explore Reference Guide features and uses
- ▲ Define indicators and why they are important
- ▲ Walk through the steps of identifying and selecting indicators using the Reference Guide

Harnessing Opportunity for Positive, Equitable Early Childhood Development (HOPE) Project



- ▲ Designed to generate real progress toward equitable outcomes for young children and their families
- ▲ Builds capacity of communities, state leaders, cross-sector state teams, and coalitions to prevent social adversities and promote child wellbeing
- ▲ Supported by the Robert Wood Johnson Foundation

Goals of Project HOPE

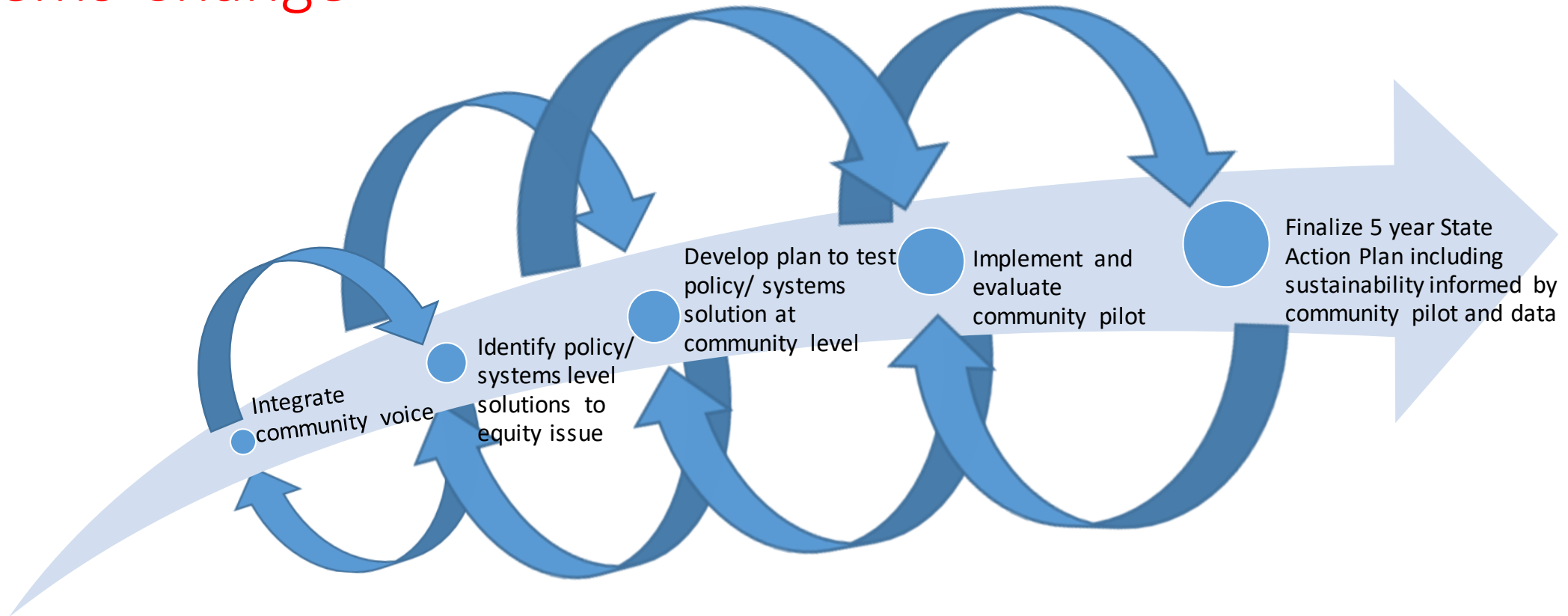
1. Promote **optimal health and wellbeing for children prenatal to age five** and prevent and mitigate early childhood adversities and improve adverse social settings by **reducing racial, ethnic, geographic, and economic inequities**.
2. **Shift or realign systems** (policies, practices, programs, initiatives, funding, governance, data, communications) to **increase access to opportunities for young children and families** in communities with significant racial, ethnic, economic, health and education disparities.
3. **Engage community members** with lived experience and **create feedback loops** to ensure ongoing communication between state and local policy makers, practitioners, community leaders and families.
4. Utilize peer, state, and community mentorship, as well as technical assistance, to **improve state, community, and coalition capacity to improve systems that positively impact child health and wellbeing** by addressing concentrated poverty, institutional or structural racism, or other aspects of early childhood adversity.

Infrastructure Components to Systems Change

- ▲ Leadership
- ▲ Communications
- ▲ Governance
- ▲ Financing
- ▲ Data



DATA helped to inform a Project HOPE state pathway to Systems Change



FL, NJ, OK, WA

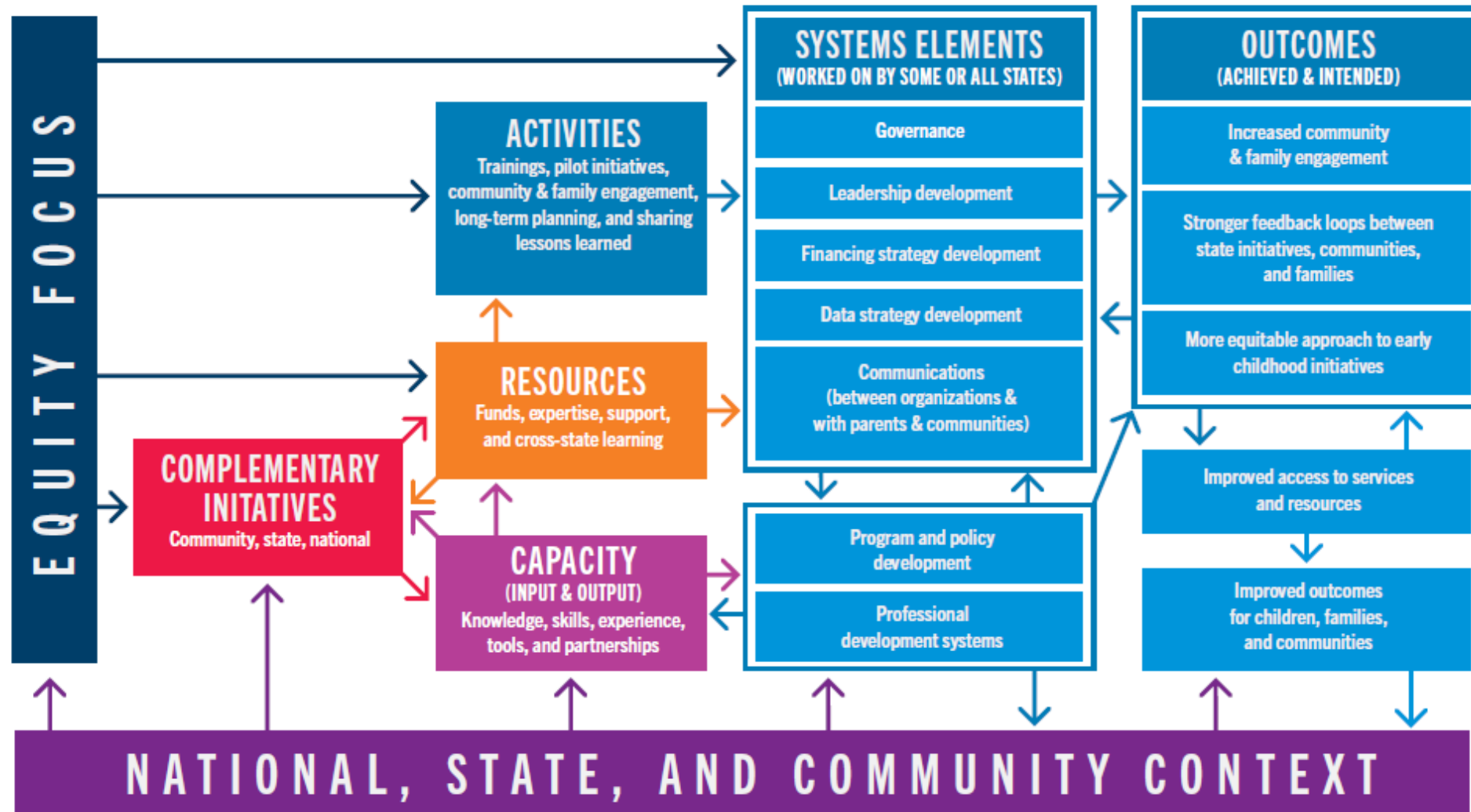
Technical Assistance; Equity Support, Community Voice/ Lived Experience Support as needed; Data collection and storytelling based on community pilot and process to inform five-year state action plan

*Iterative process

Project HOPE works with states to redesign infrastructure components, including leadership, communications, governance, financing and data, to support impactful policy and program changes across sectors (systems change). The end goal is to ensure equitable access to high-quality services and resources for young children, prenatal to age five, and their families.



HARNESSING
OPPORTUNITY FOR
POSITIVE, EQUITABLE
EARLY CHILDHOOD DEVELOPMENT



Inception of the Indicator Reference Guide

States were asked to identify data indicators and complete a goal statement.

- ▲ Signals of change
- ▲ Systems Change Outcomes
- ▲ Data Indicators
 - Short-term
 - Intermediate
 - Long-term
- ▲ Data sources



Purpose of the Reference Guide

- ▲ Provide a resource for groups working to advance health equity in early childhood to identify, select, and track indicators on young children and families to inform and advance their efforts



How the Guide Was Developed

- ▲ Environmental scan to identify datasets related to early childhood
- ▲ Curated group of datasets featured in the guide (not exhaustive)
- ▲ Summarized resources by potential usability
- ▲ Summarized data by geographic level and indicator topic area



Guide Features

- ▲ Guidelines, steps, tips, and examples on how data indicators can be used
- ▲ Resource Guides
 - Arranged to help make indicator selection process more efficient
 - Resources organized by applicability
 - Key Early Childhood Datasets
 - Additional Datasets and Tools
 - City and State-Specific Datasets and Resources
- ▲ Glossary of key terms



How Can This Reference Guide Benefit Me?

- ▲ Provides a starting point and steps for defining measurement strategy
- ▲ Save time by quickly referencing relevant datasets and indicators at your geographic level and category of interest
- ▲ Template and examples to use to describe the indicators chosen



Indicators—What are They?

- ▲ Measurable information used to approximate (“indicate”) conditions.
- ▲ Example
 - Goal: Reduce disparities in access to early childhood education
 - Indicators: number of early childhood education centers, percentage of Head Start-eligible children with a Head Start Preschool in their neighborhood



How Are Indicators Useful?

- ▲ Inform efforts to make systems-level changes to improve early childhood outcomes
- ▲ Identify and track inequities in your community
- ▲ Communicate with others about what you are doing and how it will make a difference

Guidelines for Indicator Selection

- ▲ Coordinate with other groups that have a similar focus
- ▲ Obtain community input and buy-in
- ▲ Keep equity at the forefront
- ▲ Use more direct measures to track project work, and more broad indicators to communicate about long-term goals and potential impact
- ▲ If you identify data that are missing, consider how your initiative can improve data collection and reporting

Steps in Selecting Indicators





Articulate What You Want to Accomplish

- ▲ Determine what it is that you are setting out to do
- ▲ This may be pre-determined based by a funder, existing plan, or group

Determine How You Will Measure Success

- ▲ Think about the trajectory of the project. What will the project accomplish in the
 - Short-term (6 months- 2 years)
 - Mid-term (2-5 years)
 - Long-term (5+ years)

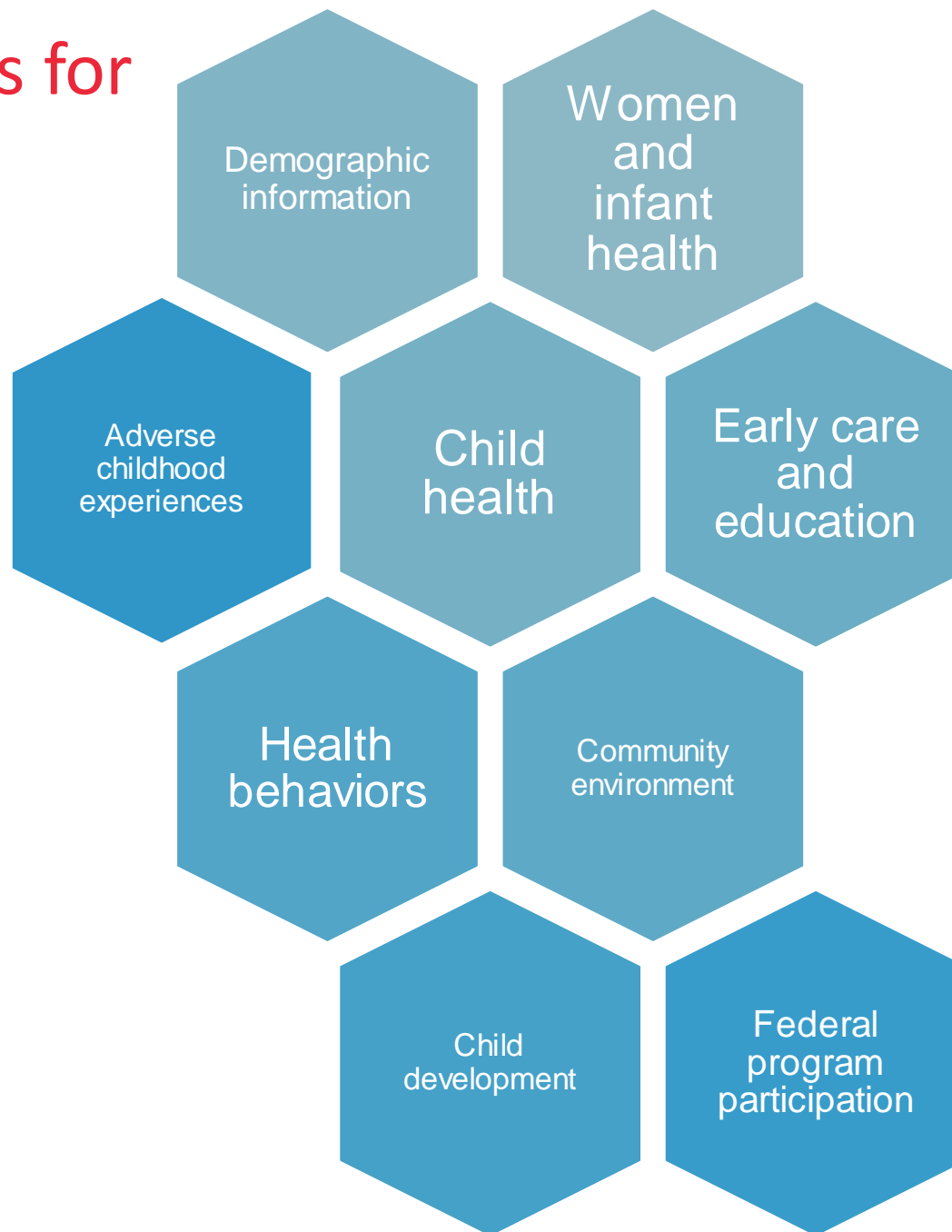
Review List of Indicators for Measuring Success

Resource	City	County	Congressional District	State	National	Other
American Community Survey	✓	✓		✓	✓	
America's Health Rankings				✓	✓	
Atlas of Rural and Small-Town America		✓		✓	✓	
Child Care Development Fund-Administrative				✓	✓	
Child Opportunity Index						Census tract, metro area
Child Trends DataBank				✓	✓	
City Health Dashboard	✓	✓	✓	✓		
Community Opportunity Map	✓	✓	✓	✓		ZIP code
County Health Rankings		✓		✓		
Healthy People				✓	✓	
HOPE Initiative				✓	✓	
KIDS COUNT	✓	✓	✓	✓		School district

- ▲ Part I: Select indicators by geography—Indicators may be available at city, county, congressional district, national and other (e.g., school district)
- ▲ See Table 1 in Reference Guide

Review List of Indicators for Measuring Success

- ▲ Part I: Select indicators by topic area
- ▲ See Table 2 in Reference Guide



Reference Guide Table 2 Example

Table 2D: Women and Infant Health

WOMEN AND INFANT HEALTH INDICATOR	DATA SOURCE(S)
Women's Health	
Adequate prenatal care	KIDS COUNT
Adequate prenatal care, by race	KIDS COUNT
Prenatal care	City Health Dashboard
Prenatal care before third trimester	America's Health Rankings
Maternity Practices in Infant and Nutrition Care (mPINC) survey score	America's Health Rankings
Birth Outcomes	
Births of low birthweight as a percentage of all births, by race/ethnicity	State Health Facts
Births to mothers who smoked during pregnancy	KIDS COUNT
Births to mothers with less than 12 years of education	KIDS COUNT
Births to women receiving late or no prenatal care (by race and ethnicity)	KIDS COUNT
Low birth weight (by race, ethnicity, and education)	America's Health Rankings, Child Trends Databank, City Health Dashboard, County Health Rankings, Healthy People, HOPE Initiative, KIDS COUNT, National Survey of Children's Health, State Health Facts

Table 2D: Women and Infant Health

WOMEN AND INFANT HEALTH INDICATOR	DATA SOURCE(S)
Women's Health	
Adequate prenatal care	KIDS COUNT
Adequate prenatal care, by race	KIDS COUNT
Prenatal care	City Health Dashboard
Prenatal care before third trimester	America's Health Rankings
Maternity Practices in Infant and Nutrition Care (mPINC) survey score	America's Health Rankings
Birth Outcomes	
Births of low birthweight as a percentage of all births, by race/ethnicity	State Health Facts
Births to mothers who smoked during pregnancy	KIDS COUNT
Births to mothers with less than 12 years of education	KIDS COUNT
Births to women receiving late or no prenatal care (by race and ethnicity)	KIDS COUNT
Low birth weight (by race, ethnicity, and education)	America's Health Rankings, Child Trends DataBank, City Health Dashboard, County Health Rankings, Healthy People, HOPE Initiative, KIDS COUNT, National Survey of Children's Health, State Health Facts
Preterm births	America's Health Rankings, KIDS COUNT, Life Course Indicators Online Tool, National Survey of Children's Health
Preterm births (by race/ethnicity)	State Health Facts
Small for gestational age	Life Course Indicators Online Tool
Very low birthweight babies	Child Trends DataBank, Healthy People, KIDS COUNT
Infant Feeding	
Breastfed	America's Health Rankings, Child Trends DataBank
Breastfed ever, 0–5 years old	National Survey of Children's Health
Breastfed exclusively, 6 months–5 years	National Survey of Children's Health
Infants breastfed at 1 year old	Healthy People
Infants ever breastfed	Healthy People
Infants exclusively breastfed through 3 months of age	Healthy People, Life Course Indicators Online Tool
Infants exclusively breastfed through 6 months of age	Healthy People
Percentage of infants who were breastfed ever, at 6 months, and at 12 months	State Health Facts
Breastfed newborns receiving formula supplementation in the first two days of life	Healthy People

Review List of Indicators for Measuring Success

- ▲ Consider frequency that data are collected and how this may impact your ability to track during the project period
- ▲ Once indicators are identified, review the dataset/tools they are available from and how they can be used



KIDS COUNT

ANNIE E. CASEY FOUNDATION
datacenter.kidscount.org

Dataset name,
author and weblink

The KIDS COUNT project tracks the well-being of children in the United States by providing high-quality data and trend analysis. The KIDS COUNT Data Center draws from more than 50 KIDS COUNT state organizations that provide state and local data, as well as publications providing insights into trends affecting family and child well-being.

Brief description of
dataset

Data Indicators

Data are categorized into five topic areas:

- 1 Overall child well-being
- 2 Economic well-being
- 3 Education
- 4 Health
- 5 Family and community

How data are
organized in the
dataset

Strategies for Using the Data

Users can select from the topics of interest and access all available data for the subject. Additionally, users can select a specific geography and create custom data reports, rankings, maps, and graphs. With these data, organizations can provide policy analysis based on evidence and shine

a spotlight on pressing issues to improve programs and policies for children and families. The 2019 KIDS COUNT Data Book ranks states on overall child well-being, as well as in specific domains of well-being including economic, educational, health, and family and community.

Ideas for how to use data
e.g., create custom
reports, rankings, maps,
charts

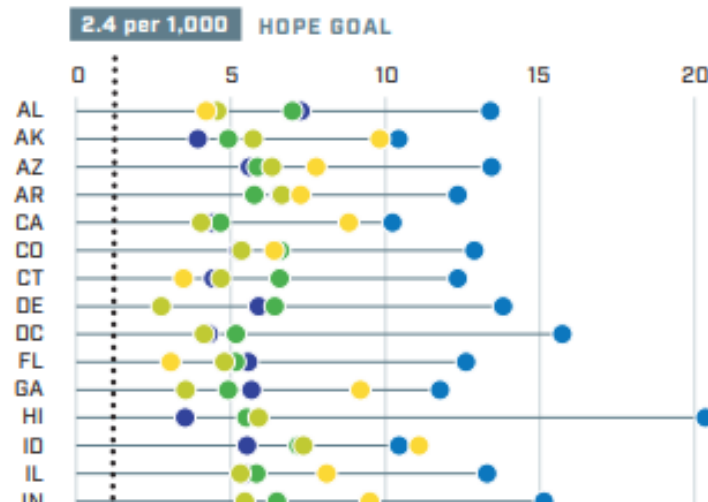
Strategies for Using the Data

State Progress Toward HOPE Goal

INFANT MORTALITY RATE PER 1,000 LIVE BIRTHS

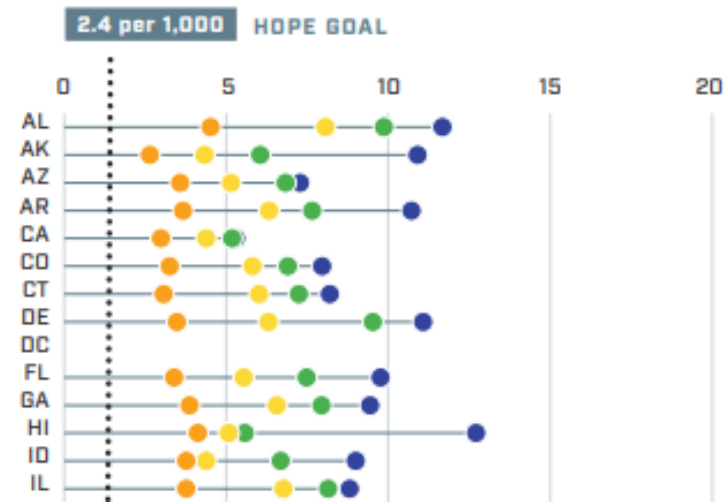
By Race and Ethnicity

● White ● Black ● Hispanic ● Asian/PI ● AI/AN



By Education

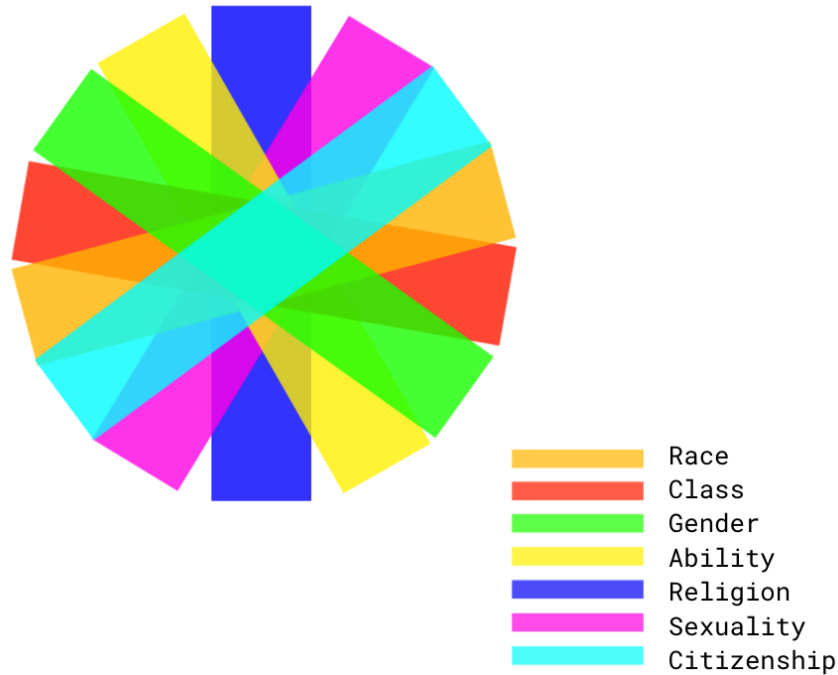
● Less than HS ● HS Grad ● Some College ● College Grad



Data and Intersectionality

Intersectionality

The interconnected nature of social categorizations such as race, class, gender, ability, religion, sexuality, and citizenship as they apply to a given individual or group, regarded as creating overlapping and interdependent systems of discrimination or disadvantage.



- ▲ Much of our data looks at people one category at a time
- ▲ Intersectionality reminds us that people's lives are shaped by multiple categories

A variety of datasets are available to find indicators related to early childhood topics. In Resource Guide Part II, some of the key sources for identifying indicators related to early childhood are summarized. Resources are organized alphabetically and include a brief summary, categories of indicators available, and suggestions for how to use each resource.

In This Resource Guide

America's Health Rankings.....	29
Child Opportunity Index.....	30
Child Trends DataBank & Early Childhood Data Collaborative.....	31
KIDS COUNT.....	32
Life Course Indicators Online Tool.....	33
National Survey of Children's Health.....	34
State Health Facts.....	35
State of America's Children.....	36



Review List of Indicators for Measuring Success

- ▲ Look at how data are being used in your community or state, or look to other communities and states for examples
- ▲ See Part IV Resource Guide for state and community examples

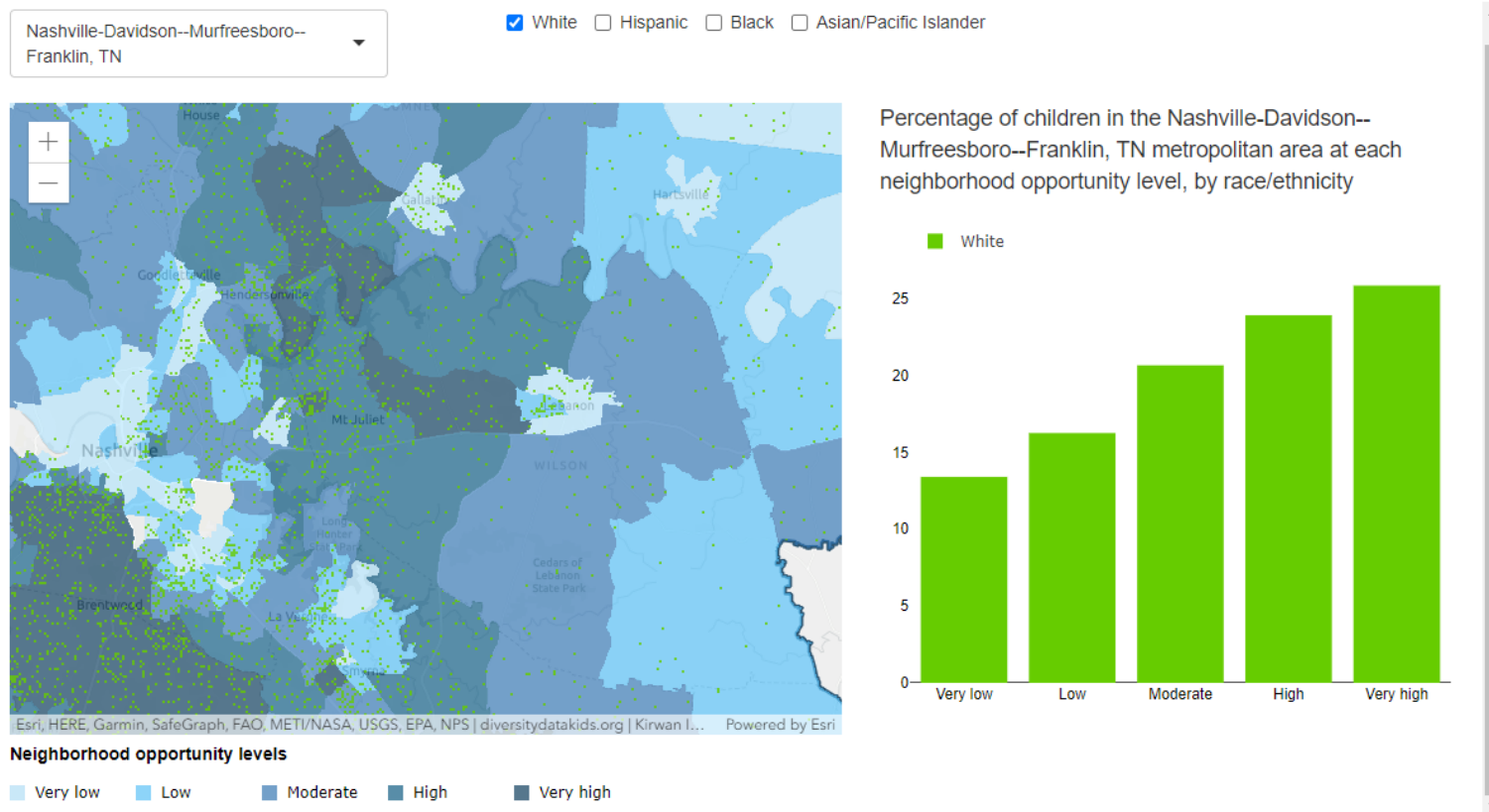


Obtain Community Input

- ▲ Gather feedback from those involved in designing and implementing the project AND those impacted
- ▲ Don't assume people know where there are disparities and inequities, be ready to share data
- ▲ Discuss how to reduce disparities and inequities related to your project

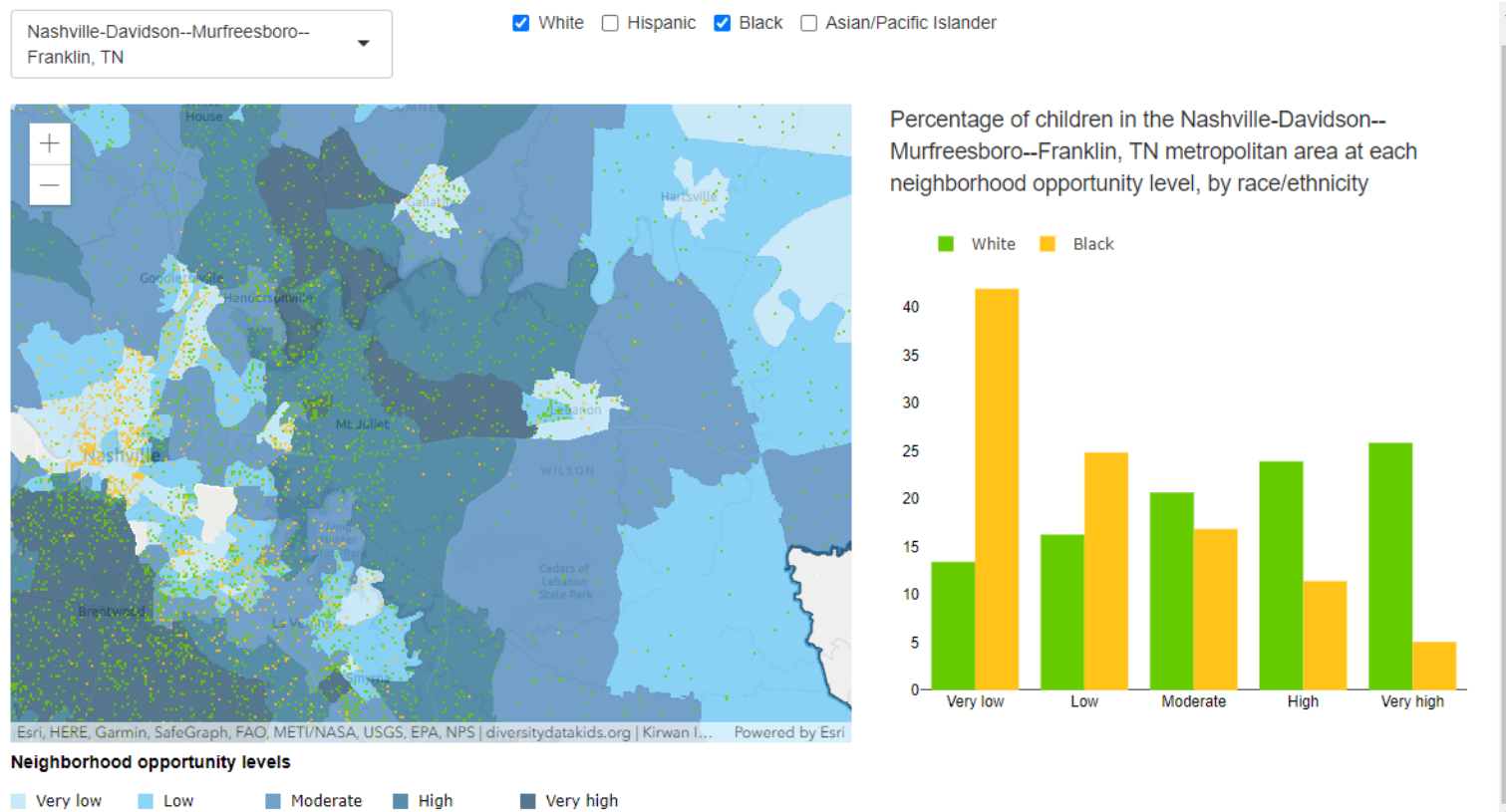
Explore Data Visualization Strategies

Child opportunity maps



Explore Data Visualization Strategies

Child opportunity maps



Create a Goal Statement

- ▲ A goal statement succinctly communicates to stakeholders about your project focus
 - What you will do
 - Who you will impact
 - How you will track progress in the short-term
 - How you will track progress in the long-term
 - Data sources for your indicators

See Pages 8-11 for Template and Examples

Infant and Maternal Health Goal Statement Example

The Infant and Maternal Health State and Community Partnership has decided to focus on improving birth outcomes for the purposes of the Healthy Mothers and Babies Project, because we believe it will improve health and well-being outcomes for women of childbearing age, infants, and very young children as well as decrease inequities.

In order to track our progress in the short term (one to three years), we will track short-term indicators such as adequate prenatal care and births to women receiving late or no prenatal care.

In the intermediate (three to five years) to long term (beyond five years), we will also track the following indicators: infant and maternal mortality, low and very low birth weights, and pre-term births.

These indicators will be tracked on an ongoing basis using State Kids Count data.

These indicators will be available at the state and county level and can be tracked by specific areas of inequity, such as race and ethnicity.

Thank You.



<https://www.movinghealthcareupstream.org/nemours-project-hope/>

PROJECTHOPE@NEMOURS.ORG



Children's Health System

Nemours.org
Georgia.Thompson@
Nemours.org



SOLUTIONS TO ADVANCE HEALTH

Altarum.org
Karah.Mantinan@altarum.org