

Welcome!



Moving Health Care Upstream

Innovating. Improving.
Inspiring a New Vision of Health.

MHCU's Policy Learning Lab Webinar

November 12, 2018

**Topic: Presentation and Q&A with
Parkland Center for Innovation**



Follow Us On Twitter

Moving Health Care Upstream
[@MHCUpstream](#)

Parkland Center for Innovation
[@PCCInnovation](#)

Thank you to our sponsors!

THE
KRESGE
FOUNDATION

Nemours®



ChangeLab
Solutions

PRESENTERS



Yolande Pengetnze, MD
PCCI, Senior Medical Director & Physician
Scientist

- Leads Population Health and Personal Engagement Programs
- Led the RWJF DASH Program in Dallas – Food For Health



Dennis Tkach, PhD
PCCI, Director of Connected Communities of
Care

- Leads The Dallas Accountable Health Community (AHC) Program, a CMS – Funded Demonstration Program

AGENDA



- **Introduction of Policy Lab Partners**
- **Brief Introduction of PCCI**
- **Overview of the Dallas Accountable Health Community (AHC) Program**
- **Questions & Answers**
 - Prepared Answers to Forwarded Questions
 - Additional Q&As



PCCI

Pioneering New Ways to Health

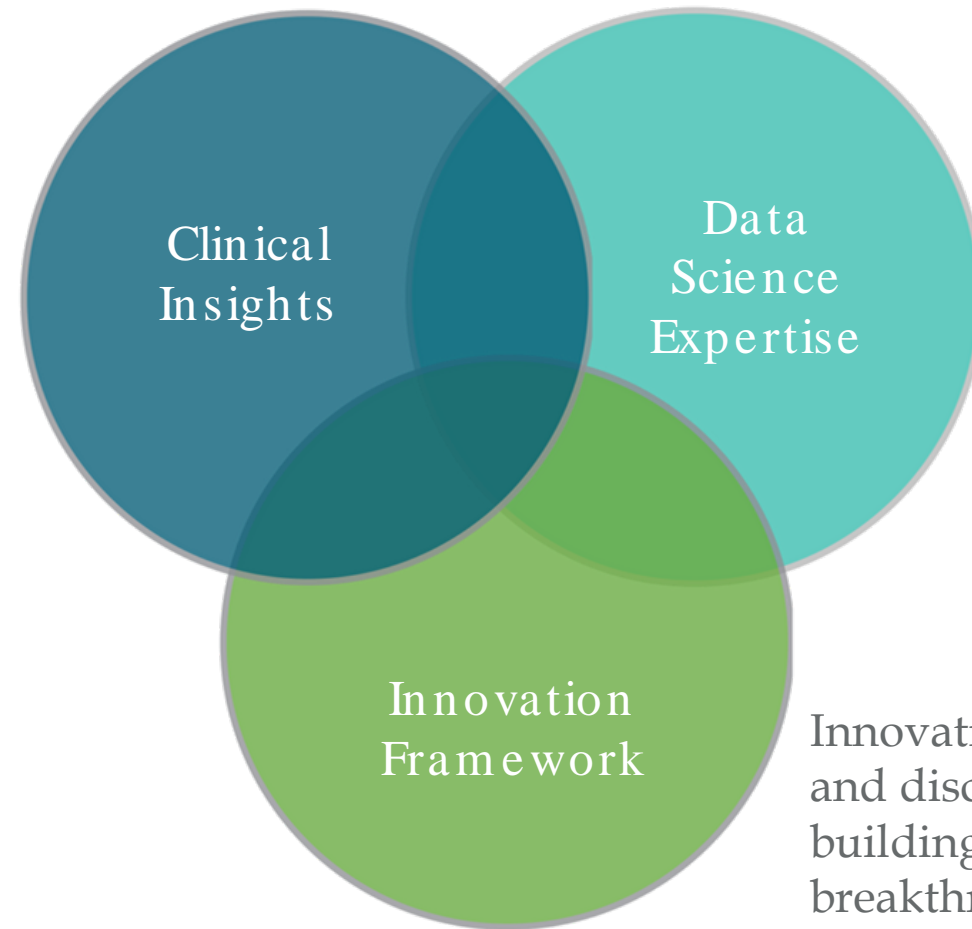
The Dallas AHC Model

CREATING A WORLD OF CONNECTED COMMUNITIES WHERE EVERY HEALTH OUTCOME IS POSITIVE

MISSION: Reimagine and expand the knowledge base of healthcare through prescriptive analytics and artificial intelligence to deliver precision medicine.

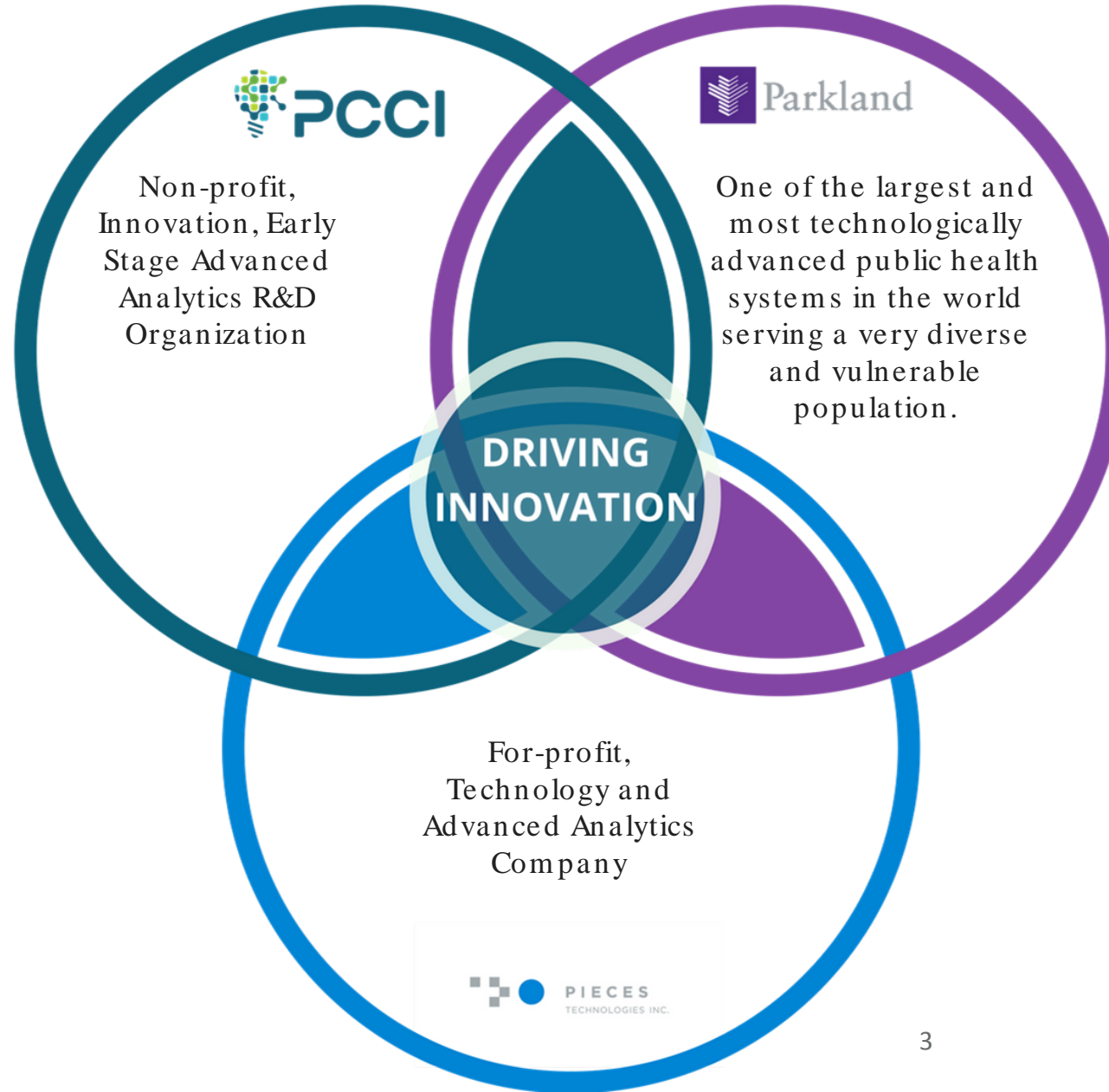
Leading clinical expertise
applying practical insights
across the continuum of care

Prescriptive analytics and
artificial intelligence driving
personalized and precision
medicine



Innovation process
and discipline,
building
breakthroughs and
leading change

PCCI ECOSYSTEM



OUR TEAM



CLINICAL EXPERTISE

11 MDs/PhDs/MBA/MS

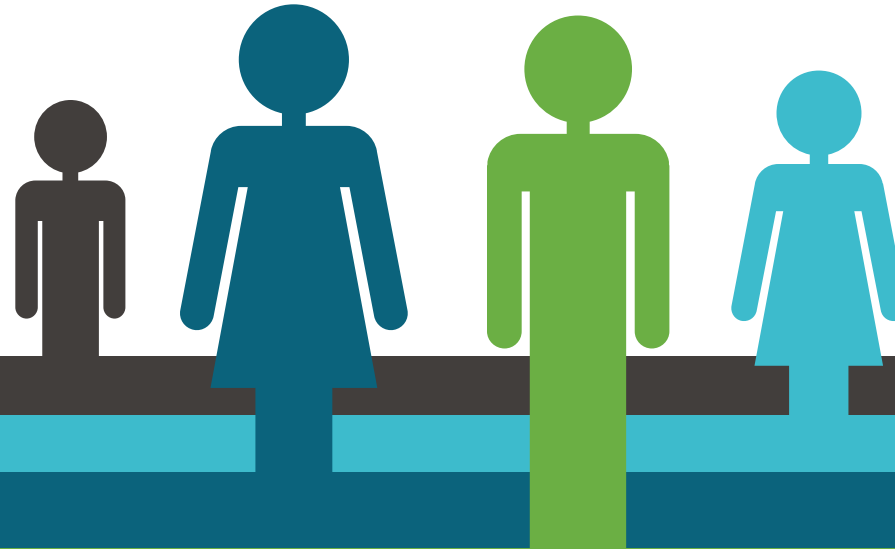
Epidemiology, oncology,
primary care, health
economics, informatics,
public health, chronic care
delivery design and
evaluation, pediatrics, and
health services research.

DATA SCIENCE

9 PhDs/MD/MS

50+ years experience

Advanced Analytics,
NLP, predictive
modeling, AI, ML,
NoSQL, R, Python



.....

AGILE◦ DESIGN THINKING◦ INNOVATION◦ COLLABORATION

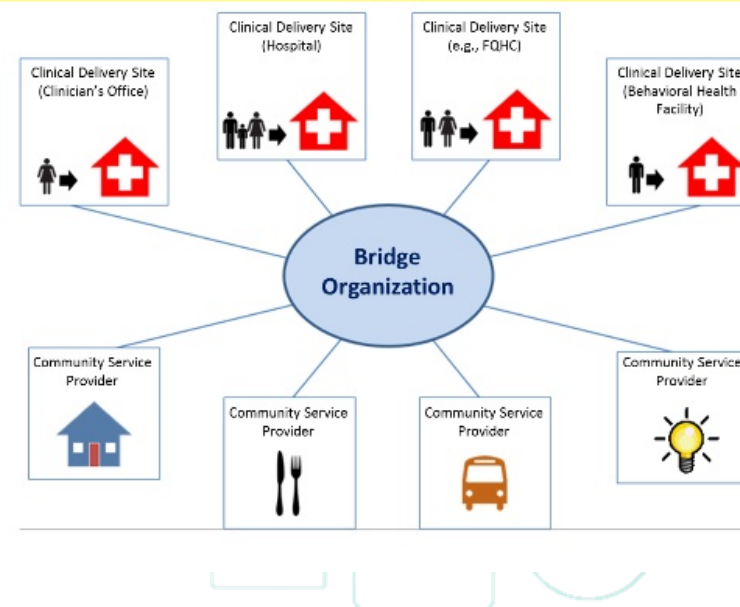
ADVANCED DATA ARCHITECTURE & PLATFORM



Background and Summary

- Accountable Health Communities (AHC) is a 5-year CMMI Model that launched on May 1st, 2017
- Designed to improve the health of our community and reduce the cost and utilization of unnecessary care.
- 32 organizations around the country participate in this effort
- Expected outcomes include reduction of ED utilization, readmissions, unnecessary hospital admissions
- We believe the Model is a precursor to new payment models where part of the cost savings are shared with the community benefit partners to support the comprehensive care of patients
- Dallas AHC has a goal of screening 75,000 and navigating 2,925 navigated beneficiaries per year (annual goal)

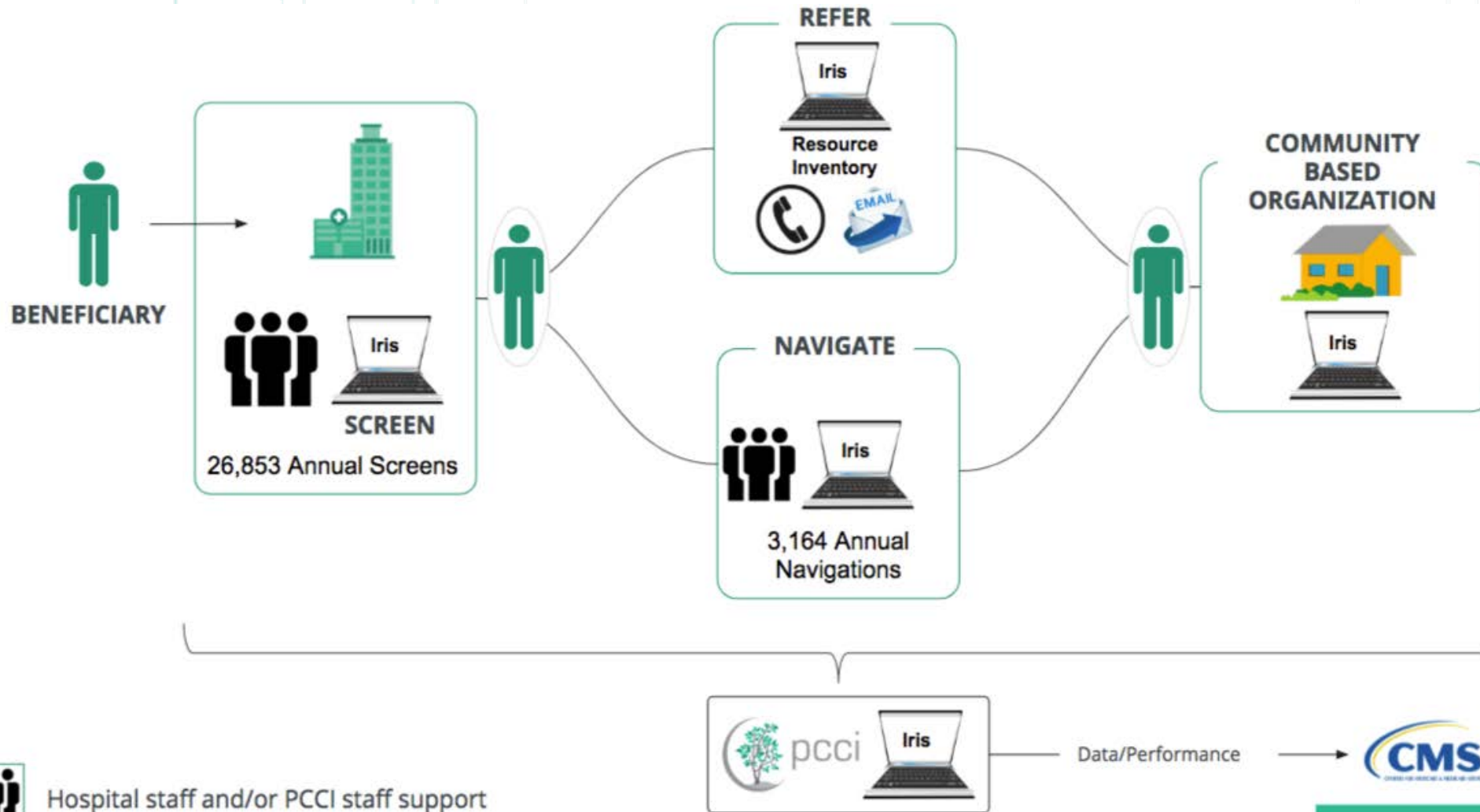
Accountable Health Communities Model Structure



AHC PARTNERS IN DALLAS



AHC WORKFLOW



NATIONAL ATTENTION ON AHC



National Attention on the Dallas AHC and PCCI



The Cross Model Learning Network

- CMS has launched the Cross Model Learning Network - a platform to foster collaboration and learning among participants of all CMMI Models
- PCCI was invited to share its experience and insights on building Connected Communities of Care in Dallas

National Attention on the AHC Model

POLITICOMAGAZINE

HealthAffairs **Blog**

**Modern
Healthcare**



MANAGED
Care

- "The 'Frequent Flier' Program That Grounded a Hospital's Soaring Costs", Arthur Allen, **POLITICO Magazine**, December 18th, 2017
- "Opportunities For Health Policy Progress In 2018: Applying the Rule of Threes", Lisa Simpson, **HealthAffairs Blog**, January 30th 2018
- "Cross-sector collaborations improve care", Alex Kacik, **Modern Healthcare**, January 8th, 2018
- "Health care: Account for race and income", Quian Callender, **The Baltimore Sun**, April 9th, 2018
- "Social Determinants of Health: Stretching Health Care's Job Description", Lola Butcher, **Managed CARE**, March 29th, 2018



Q&A



1. Prepared Answers to Forwarded Questions

2. Additional Questions

Contact:

Yolande.pengetnze@phhs.org

Dennis.tkach@phhs.org



THANK YOU
